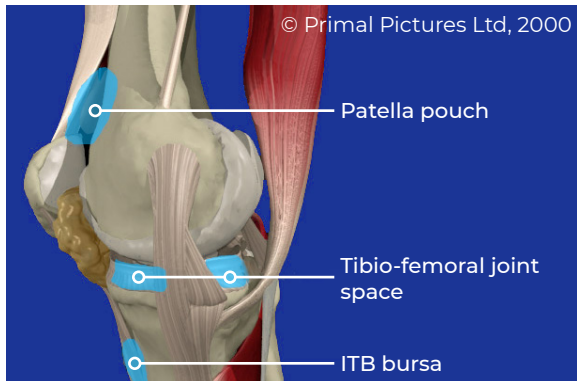
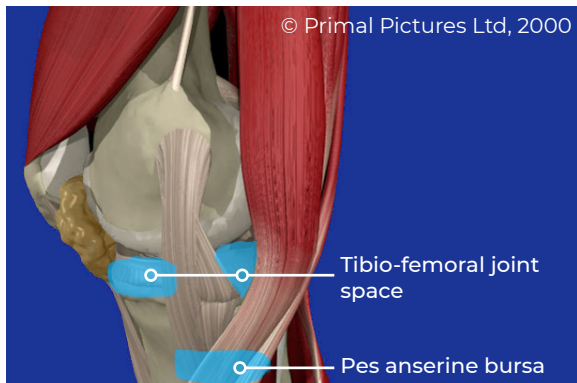


THANK YOU FOR PURCHASING

SAWBONES CONDUCTIVE KNEE INJECTION MODEL

This injection trainer can be used to teach or demonstrate needle placement for aspiration and joint injection. With the correct needle insertion, an audible tone will sound indicating proper placement of the chosen area. Palpation of the major anatomical landmarks may also be performed. Additional conductive structures may be added upon request. With a little care and maintenance your new model should provide you with many years of service.



COMPONENTS & ANATOMY

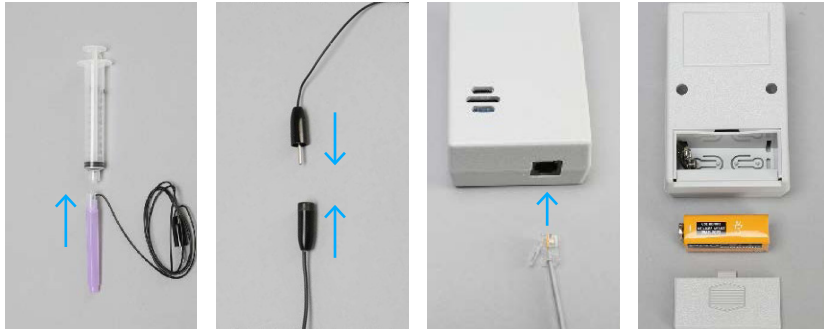
MODELS INCLUDE:

- Soft tissue injection knee
- Audio feedback box
- Needle assembly with lead
- Dry erase marker

CONDUCTIVE ANATOMICAL POINTS:

- Tibio-femoral joint space
- Pes anserine bursa
- Patella pouch
- ITB bursa

NOTE: Replacement parts available at www.sawbones.com



SET-UP INSTRUCTIONS

1. Screw the EMG needle onto syringe. Note that this is a standard Leuer lock connection.
2. Plug the black male end pin plug from the syringe into the female black cord end coming from the knee.
3. Plug the gray phone cord end into the receiving jack on the emitter.
4. The battery is stored outside of the emitter box to extend life. Remove back cover from emitter box and install battery.

OPERATION INSTRUCTIONS

1. Locate the appropriate spot for injection (i.e. ITB bursa).
2. Insert needle into location. The audio feedback box will emit a tone when the tip of the needle has made contact with the correct area.
3. Use the dry erase marker to identify injection targets.

CARE & MAINTENANCE

Your model can be wiped down with any mild cleaner. Use only the dry erase marker on the model. Standard ink can not be removed. Store in a dry, dark place out of direct contact with sunlight.

IMPORTANT: To maintain audio feedback, do not remove plunger assembly or needle from the syringe. This model is NOT intended for injection of fluids.

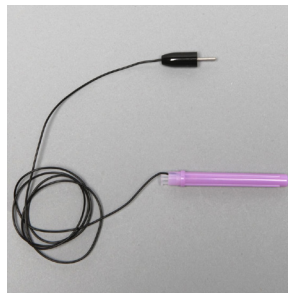
REPLACEMENT PARTS (WWW.SAWBONES.COM)



1485-106
Knee Skin Sleeve
Replacement



1620
Conductive audio
feedback emitter



1620-34
Needle Assembly with
Lead, 2" Needle Length



1620-13
Conductive Needle Set, 2"
Needle Length